

**SERIES TS & TM
GUIDE UNIT GLH**

BATTLEFIELD INTERNATIONAL ISO 6431 CYLINDER

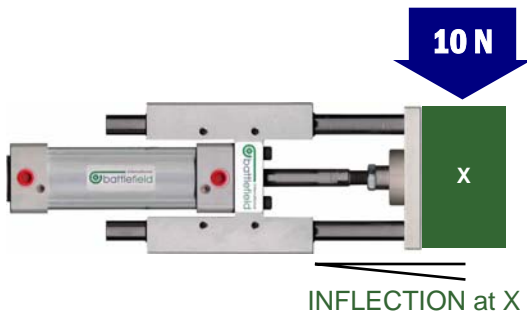
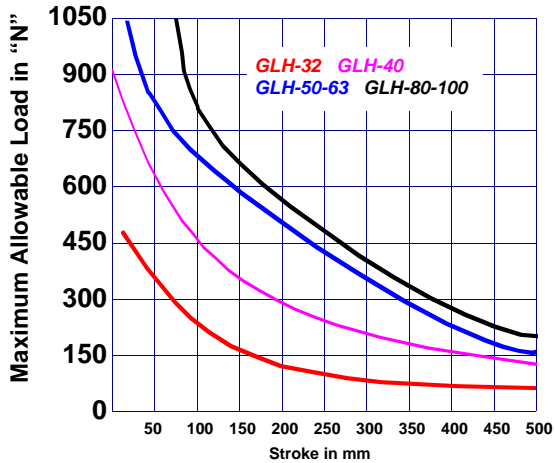


BORE SIZES	STANDARD MATERIALS	TEMPERATURE RANGE	PRESSURE RANGE
32 mm 40 mm 50 mm 63 mm 80 mm 100 mm	BODY: machined and anodized aluminum SHAFTS: chrome plated, hardened, and rectified steel ROD BEARINGS: bronze, with grease nipples SEALS: NBR, 70 shore MOUNTING SCREWS: steel; zinc or nickel plated	-20C.....+80C	1-10 bar

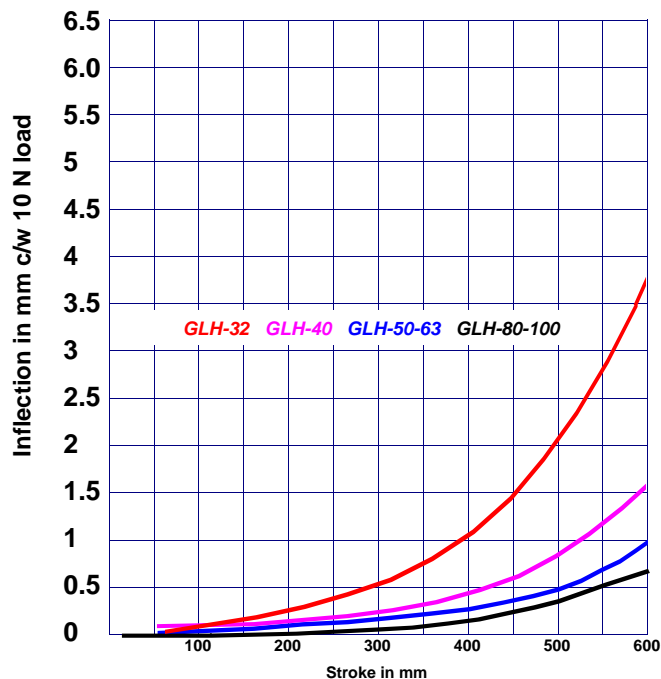
GLH Guide Units are used with series TS & TM cylinders. Battlefield International Guide Units provide an easy solution for designers requiring bearings in conjunction with their cylinder application. Anti-rotation is ensured with two steel guide stems which glide between four bronze bearings. The piston rod is connected to the front flange by a floating joint. The use of high quality materials and precision manufacturing techniques allows for excellent performance with high resistance to side loads. Pre-drilled mounting threads allow for installation without any additional mounting plates. If you do require a mounting flange, we offer our GLH-bore-P as shown on the next page. For load ratings, please consult the charts below, and part numbers can be found on the next page in this catalogue. We do not list any standard strokes as any stroke is easily produced from 1mm to 2000mm to match your cylinder. Battlefield's GLH includes the required mounting hardware to attach to the cylinder.



Maximum Allowable Load Chart. With the longitudinal axis of the GLH horizontally placed as shown directly above. Please consult the upper-right chart for the maximum allowable load in "N"

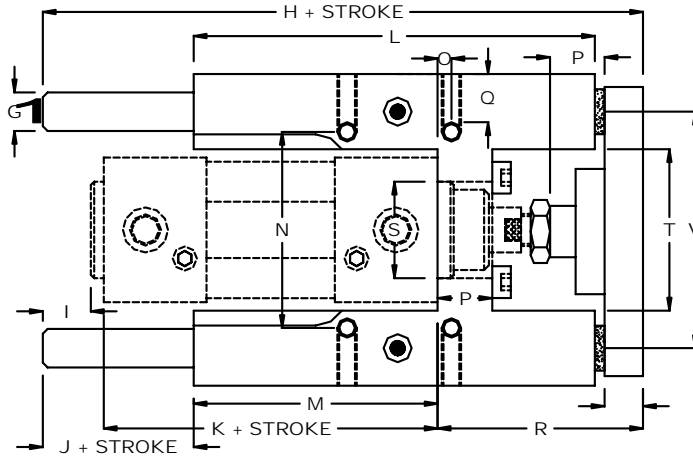
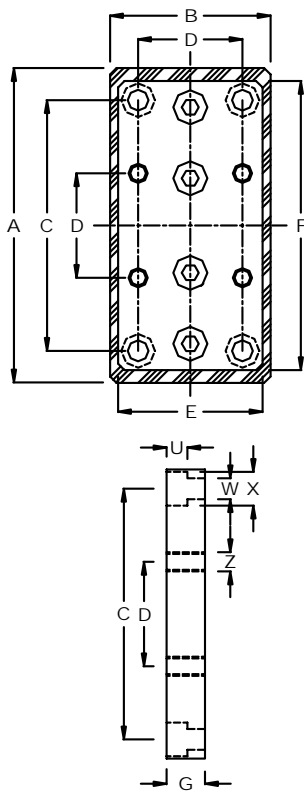


Inflection of Guide Shafts. Inflection will occur as the load and strokes are increased as shown above. The chart at the right demonstrates the inflections that will occur as the stroke is increased. This is based on a load of 10 N

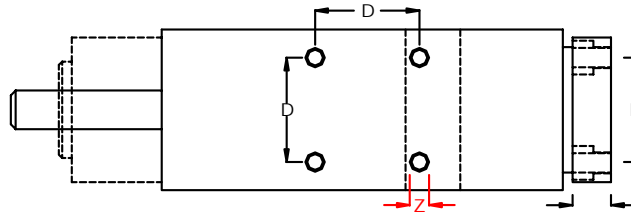


BATTLEFIELD INTERNATIONAL ISO 6431 CYLINDER

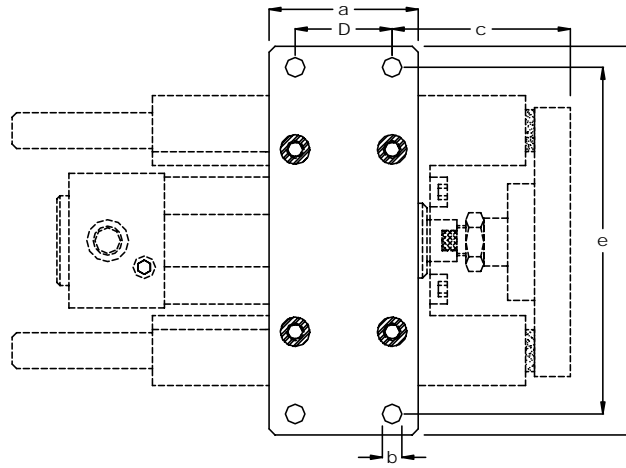
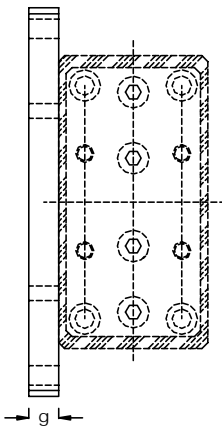
SERIES TS & TM GUIDE UNITS TYPE



**GLH- 32
GUIDE UNIT**



**GLH- 32-P
GUIDE MOUNT**



GLH-bore-P mounting plates are available for all bores from 32-100mm. Dimensions are shown below. Just specify the bore as shown above.

CYL DIA mm	Part Number Guide Unit-stroke in mm	A	B	C	D	E	F	G	H	I	J	K	L	M	N	O	P	Q	R	S	T	U	V	W	X	Z	a	b	c	e	f	g
32	GLH-32-stroke	97	50	78	32.5	45	90	12	177	15	37	94	125	76	61	4.3	17	14	71	30	50.2	6.5	74	6.5	10.5	M6	50	6.5	59.7	116	130	10
40	GLH-40-stroke	115	58	84	38	50	105	16	192	9	37	105	136	81	69	11	21	14	76	35	58.2	6.5	87	6.5	10.5	M6	55	9	63	140	160	10
50	GLH-50-stroke	137	70	100	46.5	60	124	20	237	8	37	106	144	79	85	18.8	26	16	94	40	70.2	9	104	9	13.5	M8	70	9	70.2	160	180	12
63	GLH-63-stroke	152	85	105	56.5	70	145	20	237	23	37	121	176	111	100	15.3	26	16	94	45	85.2	9	119	9	13.5	M8	80	9	73.7	175	195	12
80	GLH-80-stroke	189	105	130	72	100	180	25	280	40	42	128	215	128	130	21	34	20	112	45	105.4	11	148	11	18	M10	100	12	89	218	242	15
100	GLH-100-stroke	213	130	150	89	120	200	25	280	25	37	138	220	128	150	24.5	39	20	117	55	130.4	11	173	11	18	M10	120	14	90.5	245	272	15