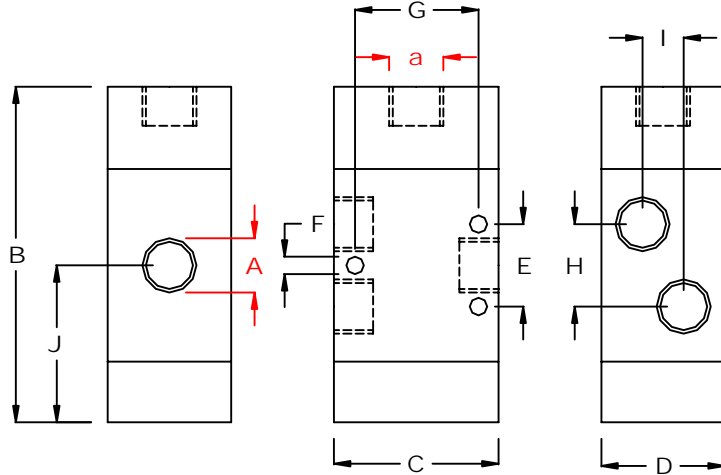


PILOT VALVES 3-WAY

BATTLEFIELD INTERNATIONAL PNEUMATIC VALVES



Series V0X32P are 3 way 2 position valves used to control air pilot valves, or to directly control cylinders and other pneumatic devices. This series offers exceptional flow characteristics and the 1/8 and 1/4 ported valves can be manifold mounted. Our V0X32P valves are made from machined and anodized aluminum. Temperature range is -20C.....+80C. Supply pressure range is 0....10 bar and the pilot pressure minimum is 2.5 bar.



Part Number	Description	Schematic	A	a	Flow	B	C	D	E	F	G	H	I	J
V0232PSXXX	1/8"3way 2position, pilot operated, spring return, normally closed		1/8	1/8	650 l/m	74	30	26	18	4.25	23	18	0	34.5
V0432PSXXX	1/4"3way 2position, pilot operated, spring return, normally closed		1/4	1/8	1080 l/m	81.5	40	30	20	4.25	30	20	10	38
V0832PSXXX	1/2"3way 2position, pilot operated, spring return, normally closed		1/2	1/8	3500 l/m	118	60	40	40	5.5	50	40	0	52
V0232PSOXX	1/8"3way 2position, pilot operated, spring return, normally open		1/8	1/8	650 l/m	74	30	26	18	4.25	23	18	0	34.5
V0432PSOXX	1/4"3way 2position, pilot operated, spring return, normally open		1/4	1/8	1080 l/m	81.5	40	30	20	4.25	30	20	10	38
V0832PSOXX	1/2"3way 2position, pilot operated, spring return, normally open		1/2	1/8	3500 l/m	118	60	40	40	5.5	50	40	0	52
V0232PPXXX	1/8"3way 2position, double pilot operated		1/8	1/8	650 l/m	79	30	26	18	4.25	23	18	0	39.5
V0432PPXXX	1/4"3way 2position, double pilot operated		1/4	1/8	1080 l/m	87	40	30	20	4.25	30	20	10	43.5
V0832PPXXX	1/2"3way 2position, double pilot operated		1/2	1/8	3500 l/m	132	60	40	40	5.5	50	40	0	52