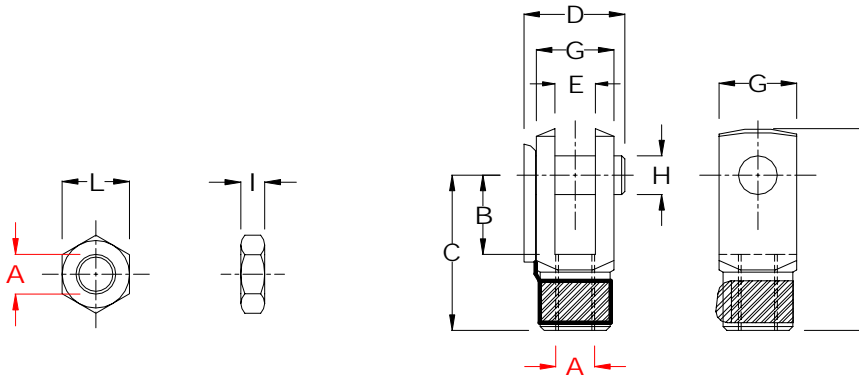


BATTLEFIELD INTERNATIONAL ISO 6431 CYLINDER

SERIES TS & TM MOUNTING HARDWARE

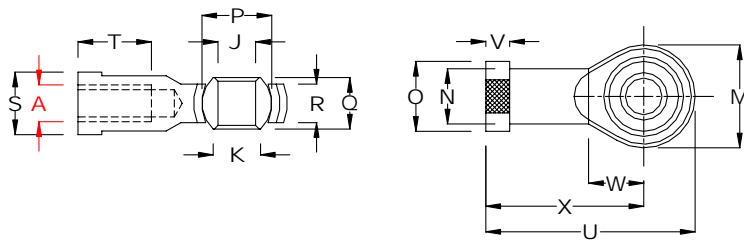


FE-ROD NUT



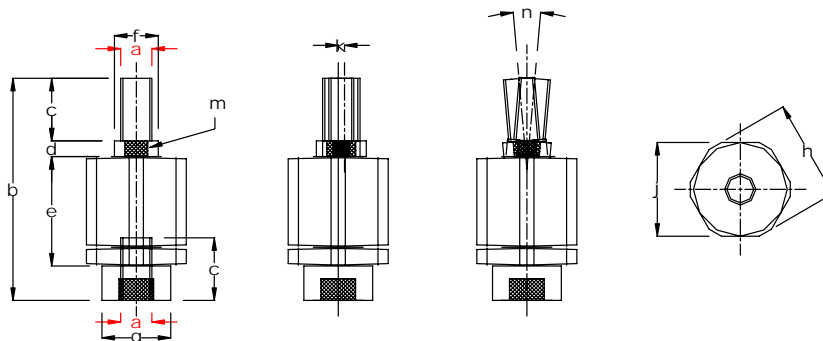
FD-FEMALE
ROD CLEVIS

CYL DIA (mm)	Rod Nut Part Number	I	L	Female Rod Clevis Part Number	A	B	C	D	E	F	G	H
32	FE-32	6	17	FD-32	M10 X 1.25	20	40	25	10	52	20	10
40	FE-40	7	19	FD-40	M12 X 1.25	24	48	30	12	62	24	12
50 & 63	FE-50.63	8	24	FD-50.63	M16 X 1.5	32	64	41	16	83	32	16
80 & 100	FE-80.100	9	30	FD-80.100	M20 X 1.5	40	80	49	20	105	40	20



FO- SPHERICAL
ROD EYE

CYL DIA (mm)	Spherical Rod Eye Part Number	A	J	K	M	N	O	P	Q	R	S	T	U	V	W	X
32	FO-32	M10 X 1.25	10	12.9	28	15	19	19	14	10.5	17	20	57	6.5	15	43
40	FO-40	M12 X 1.25	12	15.4	32	17.5	22	22.2	16	12	19	22	66	6.5	17	50
50 & 63	FO-50.63	M16 X 1.5	16	19.3	41	22	28	28.5	21	15	25	28	85	8	23	64
80 & 100	FO-80.100	M20 X 1.5	20	24.3	47	28	34	34.9	25	18	31	33	100	10	26	76



FK- ALIGNMENT
COUPLER

CYL DIA (mm)	Alignment Coupler Part Number	a	b	c	d	e	f	g	h	j	k= max mm	m	n= maximum degrees
32	FK-32	M10 X 1.25	74	24	5	35	14	22	32	30	2	12	10
40	FK-40	M12 X 1.25	74	23	5	35	14	22	32	30	2	12	10
50 & 63	FK-50.63	M16 X 1.5	103	31	7	54	22	32	45	41	2	20	10
80 & 100	FK-80.100	M20 X 1.5	112	40	7	54	22	32	45	41	2	20	10