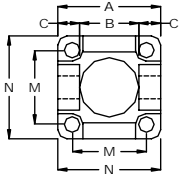
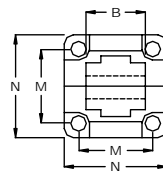
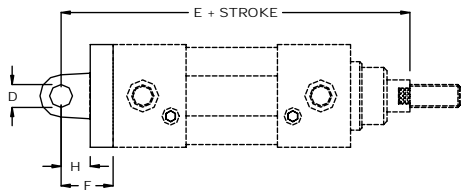


**SERIES TS & TM
MOUNTING HARDWARE**

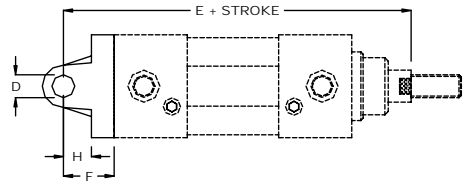
BATTLEFIELD INTERNATIONAL ISO 6431 CYLINDER



TC



TG

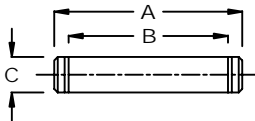


**TC-32-KIT
REAR CLEVIS
DUAL TANG**

CYL DIA (mm)	Rear Clevis Dual Tang Part Number	Rear Clevis Single Tang Part Number	A	B	C	D	E	F	G	H	M	N
32	TC-32-KIT	TG-32-KIT	45	26	9.5	10	142	22	10	12	32.5	45
40	TC-40-KIT	TG-40-KIT	52	28	12	12	160	25	12	15	38	52
50	TC-50-KIT	TG-50-KIT	65	32	14	12	170	27	12	15	46.5	65
63	TC-63-KIT	TG-63-KIT	75	40	15	16	190	32	16	20	56.5	75
80	TC-80-KIT	TG-80-KIT	95	50	20	16	210	36	16	22	72	95
100	TC-100-KIT	TG-100-KIT	115	60	25	20	230	41	20	22	89	115



**TG-32-KIT
REAR CLEVIS
SINGLE TANG**

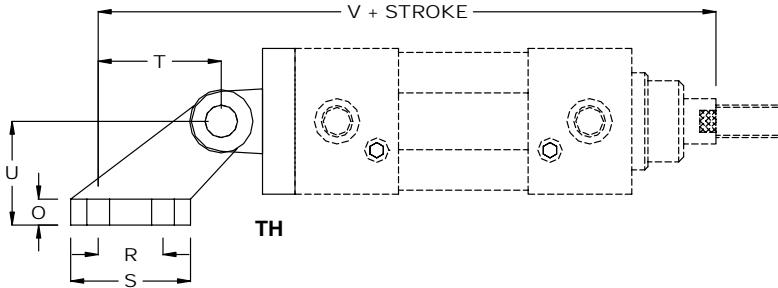


FF

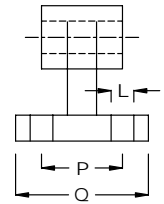
CYL DIA (mm)	Clevis Pin Part Number	A	B	C
32	FF32	53	46	10
40	FF-40	60	53	12
50	FF-50	68	61	12
63	FF-63	78	71	16
80	FF-80	98	91	16
100	FF-100	118	111	20



**FF-32
CLEVIS PIN**



TH



TH



**TH-32-KIT
CLEVIS FOOT**

CYL DIA (mm)	Foot Clevis	L	O	P	Q	R	S	T	U	V
32	TH-32	6.5	8	25	41	20	37	38	32	180
40	TH-40	9	10	32	52	32	54	57	45	217
50	TH-50	9	10	32	52	32	54	57	45	227
63	TH-63	11.5	12	40	63	50	75	82	63	272
80	TH-80	11.5	12	40	63	50	75	82	63	292
100	TH-100	14.5	16	50	80	70	103	110	90	340