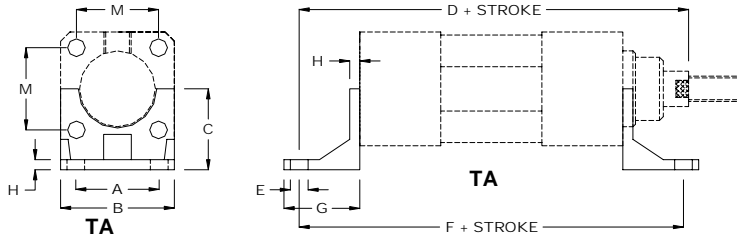


BATTLEFIELD INTERNATIONAL ISO 6431 CYLINDER

SERIES TS & TM MOUNTING HARDWARE



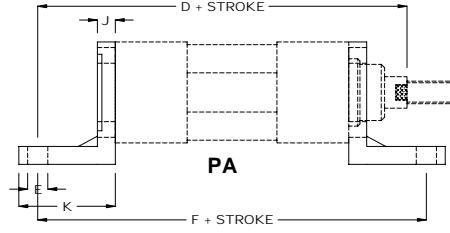
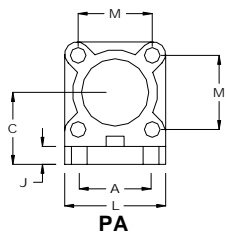
CYL DIA (mm)	Foot Mount Part Number	Foot Mount Part Number	A	B	C	D	E	F	G	H	M	J	K	L
32	TA-32-KIT	PA-32-KIT	32	45	32	144	7	142	35	4	32.5	8	35	45
40	TA-40-KIT	PA-40-KIT	36	51.5	36	163	9	161	36	4	38	8	35	52.5
50	TA-50-KIT	PA-50-KIT	45	62	45	175	9	170	42	5	46.5	10	45	65
63	TA-63-KIT	PA-630-KIT	50	75	50	190	9	185	45	5	56.5	10	45	75
80	TA-80-KIT	PA-80-KIT	63	95	63	215	12	210	55	6	72	12	55	95
100	TA-100-KIT	PA-100-KIT	75	115	71	230	14	220	58	6	89	12	56	115



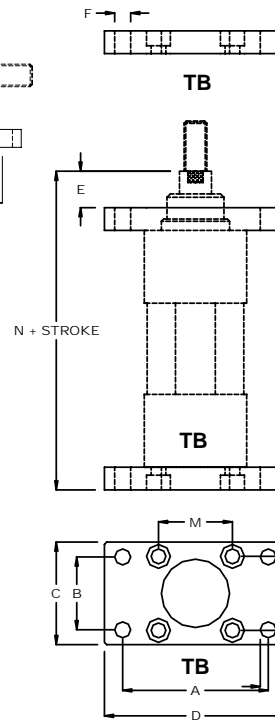
**TA-32-KIT
FOOT MOUNT**



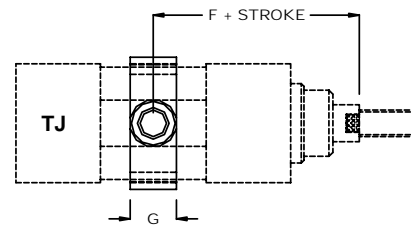
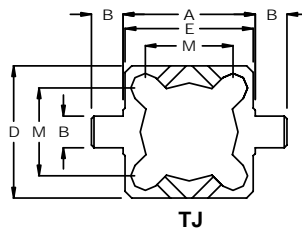
**PA-32-KIT
FOOT MOUNT**



CYL DIA (mm)	Front / Rear Flange Mount Part Number	A	B	C	D	E	F	G	M	N
32	TB-32-KIT	64	32	45	80	16	7	10	32.5	130
40	TB-40-KIT	72	36	52	90	20	9	10	38	145
50	TB-50-KIT	90	45	65	110	25	9	12	46.5	155
63	TB-63-KIT	100	50	75	120	25	9	12	56.5	170
80	TB-80-KIT	126	63	95	150	30	12	16	72	190
100	TB-100-KIT	150	75	115	170	35	14	16	89	205



**TB- 32-KIT
FLANGE MOUNT**



CYL DIA (mm)	Trunion Part Number	A	B	D	E	G	M	F + stroke minimum	F + stroke maximum
32	TJ-32	50	12	50	49	18	32.5	70.5	75.5
40	TJ-40	63	16	60	60	20	38	75.5	89.5
50	TJ-50	75	16	71	71	20	46.5	83.5	96.5
63	TJ-63	90	20	85	85	26	56.5	91	104
80	TJ-80	110	20	106	106	26	72	99.5	120.5
100	TJ-100	132	25	130	130	32	89	116	124



**TJ- 32
TRUNION MOUNT**